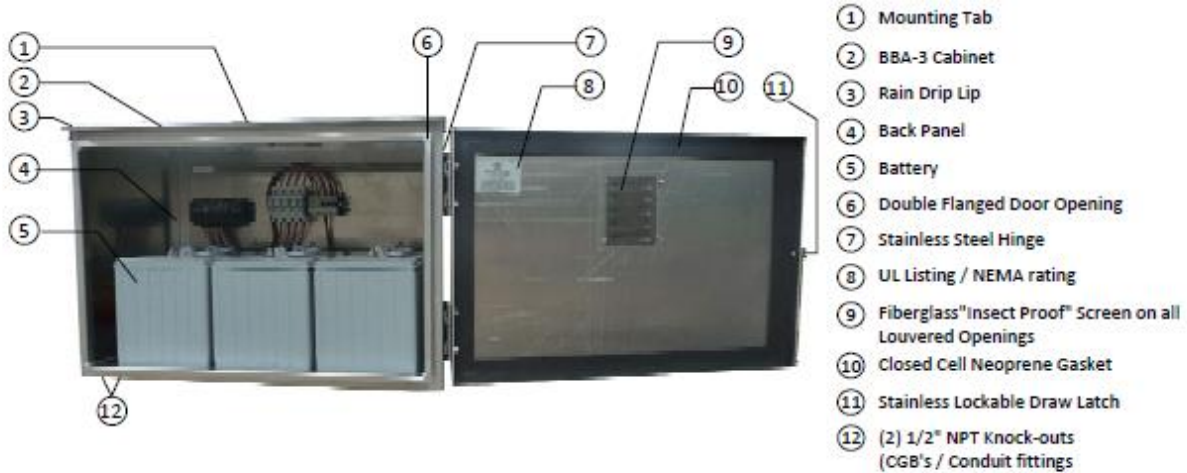


BIS XL Aluminum Weatherproof Box



UL Listed: UL 508A, NEMA 3R (standard)	Dimensions: - Overall: (H) 22.625" x (W) 26.5" x (D) 17" - Opening: (H) 15.25" x (W) 23" - Inside: (H) 18" x (W) 25" x (D) 15" - (H) 14.5" x (W) 22.5"	Weight: 37 lbs
		



ROHN Tower Mounted



- Fits ROHN25-45 Tower
- (4) U-Bolts - not included

Pole Mounted



- Fits 2" to 3" pipe / SCH 40 pole
- Use (2) U-Bolts - not included

Wall Mounted



- (4) Lag Bolts - not included

"Call for pricing and availability on the below options:"

Assembly (Optional)



- Custom design and sized to meet solar system requirements

Additional Options

- Breather-drain (ECD15) for NEMA4 / 4X (Required for all battery applications)
- Heat strips (120V 150W with thermostat)
- Interior insulation (Low E)
- Sun shields - available for top, sides and door
- Key lock (#1 or #2 Pelco)

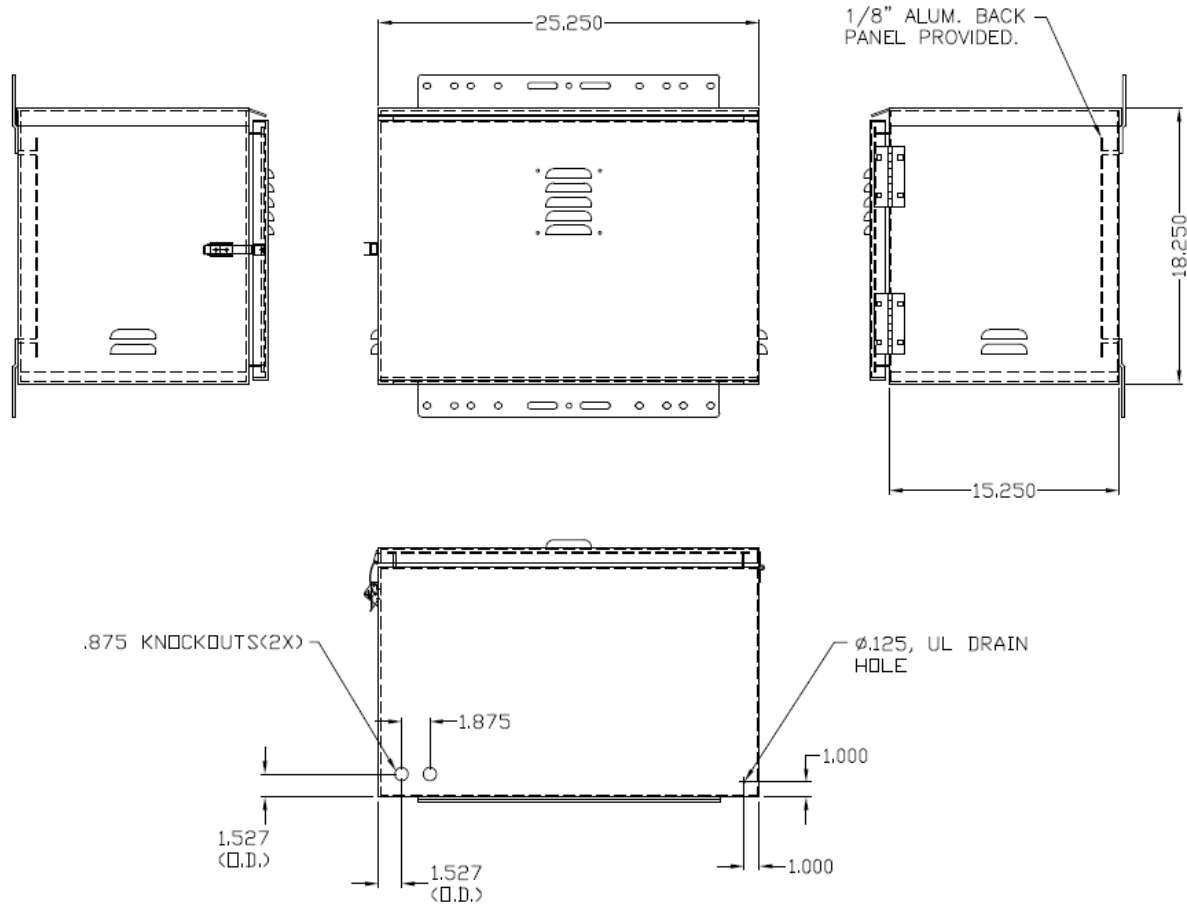
Door Fan (Optional)



- Fans available in : (12V, 24V and 48V DC / 120V AC)

Banding (Optional)





NOTE:

1. POLE, BANDING, OR WALL MOUNT CONFIGURATION.
2. CABINET DIMENSIONS INSIDE, 18"H X 25"W X 15"D.
3. MANUFACTURED TO NEMA 3R SPECIFICATIONS.
4. DOUBLE FLANGED DOOR OPENING.
5. SST HINGE AND HARDWARE.
6. SCREENED LOUVERS ON DOOR FOR VENTILATION.
7. 14.50 X 22.50 X .125 ALUM. BACK PANEL.
8. GASKET ON DOOR
9. ONE (1) PAD LOCKABLE DRAW LATCH