

SF1005-V+

SF1008+

SPEEDFACE+ SERIES

Face & palm access control readers
+ Body temperature & Mask detection



SpeedFace + is a series of high performance face, palm, and fingerprint recognition readers that additionally detect body temperature and the presence of a protective mask worn by both registered and unregistered users.

The SpeedFace + embedded face & palm recognition sensor provides 100% touchless user authentication for various applications including Access Control, Time & Attendance, Visitor Management, Event Management, and more.

Model SF1008+ can store and match up to 50,000 faces in less than 0.3 seconds while operating in both total darkness and bright sunlight (up to 50,000 Lux).

Body Temperature & Mask Detection

In addition to providing face, palm, and fingerprint user authentication, SpeedFace+ can detect body temperature and the presence of a protective mask being worn by both registered and unregistered users. Users can be denied door access if a user-defined unacceptable body temperature or if no mask is detected.

The ability to quickly & accurately detect body-temperature and the presence of a mask is becoming increasingly important for airports, schools, commercial office buildings, and other public meeting areas.

People identified having unacceptable body-temperature and their supervisors can then take appropriate action. SpeedFace+ combines a powerful embedded thermal camera and ZKTeco's latest face, palm, and fingerprint recognition algorithms that are supported by an optimized dual-core processor. SpeedFace+ is unmatched in accuracy, matching-speed, and versatility. It provides advanced security and convenience, all on a single affordable device.

FEATURES:

- User authentication read range up to 8 feet
- Body-temperature read range accurate up to 0.6 °F from up to 18" away*
- Model SF1008+ stores & matches up to 50,000 face templates (SF1005-V+, 6,000)
- Face verification possible while wearing protective mask (palm recognition advised)
- Model SF1008+ can store & match up to 5,000 palm templates (SF1005-V+, 3,000)
- Model SF1005-V+ additionally stores and matches up to 10,000 fingerprint templates
- Model SF1008+ has an 8" programmable touchscreen display (SF1005-V+, 5" display)
- Intelligent energy-saving design
- Dual-lens IR & VL camera recognizes faces in both total darkness and bright sunlight

*Body temperature accuracy +/- 0.6 °F when installed in climate controlled rooms. If room temperature is variable, ZKTeco recommends recalibrating SpeedFace+ temperature settings accordingly.

SPECIFICATIONS:

Capacity (model SF1008+)

Faces: 50,000 | Palms: 5,000

Capacity (model SF1005-V+)

Faces: 6,000 | Palms: 3,000

Fingerprints: 10,000

Compatibility

Wiegand Input Panels
Wiegand Output readers
ZKBioSecurity Software
ZKTeco Security Relay Box (SRB)

Hardware

900 MHz Dual Core CPU
512MB RAM/ 8G Flash
8" or 5" Touch Screen Display
2MP WDR Camera
Distance Detection Sensor
Reset Button & Tamper Switch

Access Control Interface

Lock Relay Output
Alarm Output / Auxiliary Input
Exit Button / Door Sensor

Special Functions

0.3s Recognition Speed
Liveness Detection
Event Snapshot

Standard Functions

Access Levels, Groups, Holidays
DST, Duress Mode (password)
Anti-Passback, Record Query
Tamper Switch Alarm

Temperature Detection

Temperature Accuracy: +/- 0.6°F*
Temperature Distance: 18 inches
Protective Mask Detection

Communication

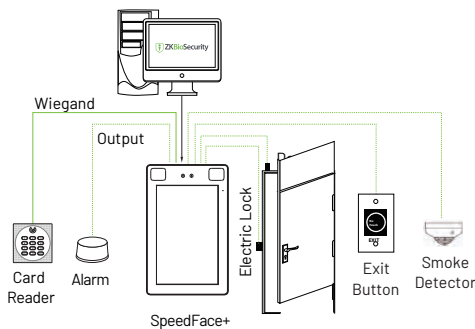
TCP / IP
RS485
Wiegand Input / Output
Optional Wi-Fi

Additional Info

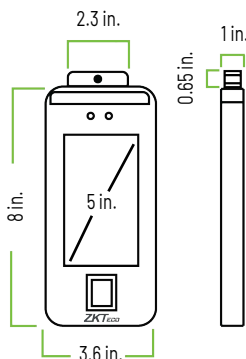
Face Algorithm: ZKLiveFace 5.8
Working Temp: -22°F to 140°F
Easily change display from °F to °C
Working Humidity: ≤ 93%
Storage Temp: - 40°F to 169°F
Storage Humidity: ≤ 93%
Net Weight: 1.5 lbs
Size (HxLxD): 8.9 x 5.6 x 1 inch

Power Operating Voltage: 12V DC
Current Draw: < 2,000mA

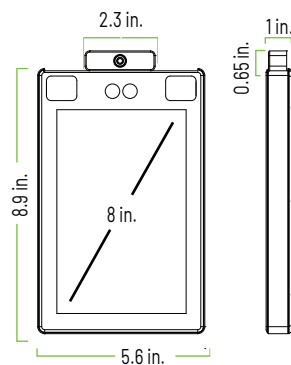
CONFIGURATION:



DIMENSIONS:



Model SF1005-V+



Model SF1008+

ZKTeco USA

1600 Union Hill Rd., Alpharetta GA 30005

Phone: (862) 505 - 2101 • Fax: (862) 204 - 5906 • sales@zktecousa.com • www.zktecousa.com

© Copyright 2020. ZKTeco Inc. ZKTeco Logo and ZKTeco USA Logo have registered trademarks of ZKTeco or a related company.

All other product and company names mentioned are used for identification purposes only and maybe trademarks of their respective owners.

All specifications are subject to change without notice. All rights reserved.

ProSF+-04172020