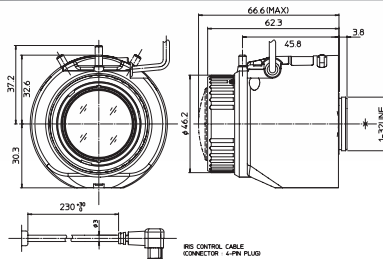


6MP

DV2.2x4.1SR4A-SA2L **NEW**

Applicable camera (model) 1 2/3 1/1.8 1/2 1/3 1/4

Applicable to 1/1.8



Unit : mm

Day Night

Fuji HD 6MP

Vari-Focal Wide Angle DC or Paris CS Mount Metal Mount ND Filter Long Cable Aspherical Lens Large Aperture Ratio RoHS Compliant

VARI WIDE DC/P CS-mt METAL ND

230

AT

F1.6

RoHS

Focal Length (mm)	4.1 - 9 (2.2x)	
Iris Range	F1.6 - T360	
Operation	Zoom Manual	
	Focus Manual	
Angle of View (H x V)	Iris Auto (DC type or P-Iris)	
	1/1.8	WIDE 100° 11' x 74° 21'
		TELE 45° 17' x 33° 59'
	1/2	WIDE 89° 33' x 66° 42'
		TELE 40° 43' x 30° 34'
	1/3	WIDE 66° 42' x 49° 50'
		TELE 30° 34' x 22° 56'
	1/4	WIDE 49° 50' x 37° 18'
Angle of View (H x V)	1/1.8	WIDE 109° 23' x 60° 32'
		TELE 49° 18' x 27° 47'
	1/2	WIDE 97° 52' x 54° 20'
		TELE 44° 21' x 24° 59'
	1/3	WIDE 72° 47' x 40° 39'
		TELE 31° 17' x 18° 44'
	1/4	WIDE 54° 20' x 30° 27'
		TELE 24° 59' x 14° 3'
Focus Range (From the Lens Front) (m)	∞ - 0.3m	
Mass (g)	135	

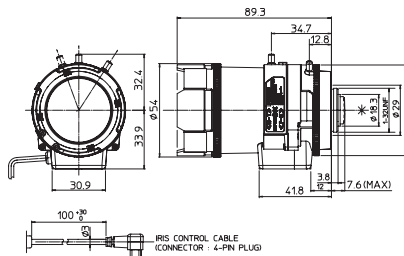
5MP

DV4x12.5SR4A-SA1

Applicable camera (model) 1 2/3 1/1.8 1/2 1/3 1/4

4 x

Applicable to 1/1.8



Unit : mm

Day Night

Fuji HD 5MP

Vari-Focal Long Focal DC Auto Iris C Mount Metal Mount ND Filter Long Cable Aspherical Lens Large Aperture Ratio RoHS Compliant

VARI TELE DC C-mt METAL ND

230

AT

F1.6

RoHS

Focal Length (mm)	12.5 - 50 (4x)	
Iris Range	F1.6 - T360	
Operation	Zoom Manual	
	Focus Manual	
Angle of View (H x V)	Iris Auto (DC type)*1	
	1/1.8	WIDE 32° 54' x 24° 37'
		TELE 8° 14' x 6° 13'
	1/2	WIDE 29° 32' x 22° 7'
		TELE 7° 26' x 5° 36'
	1/3	WIDE 22° 7' x 16° 34'
		TELE 5° 36' x 4° 12'
	1/4	WIDE -
Angle of View (H x V)	1/1.8	WIDE 35° 52' x 20° 6'
		TELE 8° 57' x 5° 5'
	1/2	WIDE 32° 12' x 18° 3'
		TELE 8° 4' x 4° 35'
	1/3	WIDE 24° 6' x 13° 32'
		TELE 6° 5' x 3° 27'
	1/4	WIDE -
		TELE -
Focus Range (From the Lens Front) (m)	∞ - 0.8	
Mass (g)	175	

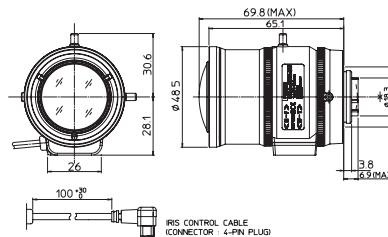
3MP

DV3.8x4SR4A-SA1

Applicable camera (model) 1 2/3 1/1.8 1/2 1/3 1/4

3.8 x

Applicable to 1/1.8



Unit : mm

Day Night

Fuji HD 3MP

Vari-Focal Wide Angle DC Auto Iris C Mount Metal Mount ND Filter Long Cable Aspherical Lens Large Aperture Ratio RoHS Compliant

VARI WIDE DC C-mt METAL ND

230

AT

F1.5

RoHS

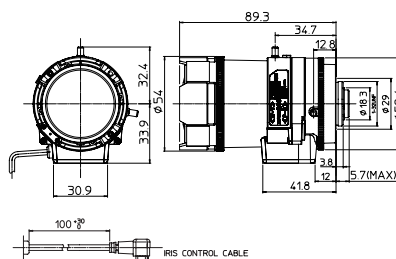
Focal Length (mm)	4 - 15.2 (3.8x)	
Iris Range	F1.5 - T360	
Operation	Zoom Manual	
	Focus Manual	
Angle of View (H x V)	Iris Auto (DC type)*1	
	1/1.8	WIDE 103° 27' x 77° 03'
		TELE 27° 23' x 20° 34'
	1/2	WIDE 92° 42' x 69° 08'
		TELE 24° 38' x 18° 29'
	1/3	WIDE 69° 08' x 51° 40'
		TELE 18° 29' x 13° 53'
	1/4	WIDE 51° 40' x 38° 41'
Angle of View (H x V)	1/1.8	WIDE 113° 02' x 62° 46'
		TELE 29° 48' x 16° 49'
	1/2	WIDE 101° 14' x 56° 21'
		TELE 26° 49' x 15° 07'
	1/3	WIDE 75° 25' x 42° 09'
		TELE 20° 08' x 11° 21'
	1/4	WIDE 56° 21' x 31° 34'
		TELE 15° 07' x 8° 31'
Focus Range (From the Lens Front) (m)	∞ - 0.3	
Mass (g)	120	

DV10x8SR4A-SA1

Applicable camera (model) 1 2/3 1/2 1/3 1/4

10 x

Applicable to 1/2



Unit : mm

Day Night

Fuji HD 3MP

Vari-Focal Long Focal DC Auto Iris C Mount Metal Mount ND Filter Long Cable Aspherical Lens Large Aperture Ratio RoHS Compliant

VARI TELE DC C-mt METAL ND

230

AT

F1.6

RoHS

Focal Length (mm)	8 - 80 (10x)	
Iris Range	F1.6 - T360(Equivalent to F360)	
Operation	Zoom Manual	
	Focus Manual	
Angle of View (H x V)	Iris Auto (DC type)*1	
	1/1.8	WIDE -
		TELE -
	1/2	WIDE 44° 33' x 34° 58'
		TELE 4° 42' x 3° 32'
	1/3	WIDE 34° 58' x 26° 35'
		TELE 3° 32' x 2° 39'
	1/4	WIDE 22° 40' x 17° 06'
Angle of View (H x V)	1/1.8	WIDE -
		TELE -
	1/2	WIDE 49° 39' x 29° 10'
		TELE 5° 07' x 2° 53'
	1/3	WIDE 38° 16' x 22° 05'
		TELE 3° 50' x 2° 09'
	1/4	WIDE 24° 42' x 14° 03'
		TELE 2° 35' x 1° 27'
Focus Range (From the Lens Front) (m)	∞ - 1.5	
Mass (g)	180	

* 1: The Iris automatically closes when the camera is turned off. * 2: Angle of view values for the 1/2.7 model.
 ※ Each of the above products is also available in manual type. ※ Each of the above products is also available in long cable type (230 mm).