



## FS-DM-DOME

# DOME INSTALLATION INSTRUCTIONS



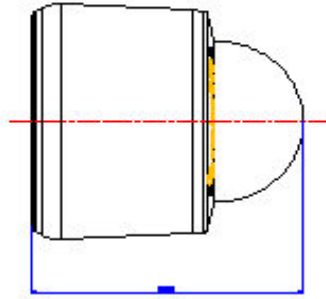
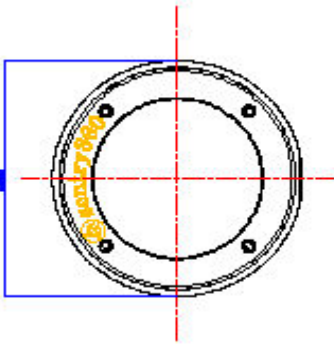
### 1. CHARACTER

Sentry 360 Camera Dome Case can use indoor and outdoor, and enable to more easy installation the camera. Also let the camera can take by 360° without barriers. The camera dome case has been produced using die-castings in highest quality aluminum materials, UV powder coating and high definition, high transmittance riot PC transparent cover. This case can be matched to a straight pipe or bend pipe bracket.

### 2. SPECIFICATIONS

Model	FS-DM-DOME		
Use	Indoor / Outdoor use		
Options	Blower (B) / Heater (H) / PoE Board		
Input Voltage	DC48V PSE		
Power Consumption	9.6W		
Operational Range	IP DOME Temperature: : -15°C~+50°C Humidity:: 0~95%		
Heater Blower Switch On	Heater : ON 4°C±3 °C		
Size	Mode		
	IP DOME	φ148.4(W)x160.8(H) m/m	φ130.5(W)x155.3(H) m/m
	DOME	φ148.4(W)x160.8(H) m/m	φ130.5(W)x155.3(H) m/m
Weight	IP DOME: 1.8 KG, DOME : 1.6 KG,		
Material	Body: Aluminum (ADC-12) Window PC transparent cover		
Water Proof	IP66		
Accessory	5mm Wrench (1ea) . Plastic expansion-(4ea). M4 steel screw - (4ea)		

### 3. DRAWINGS/CONTENTS



### 4. INSTALLATION INSTRUCTIONS

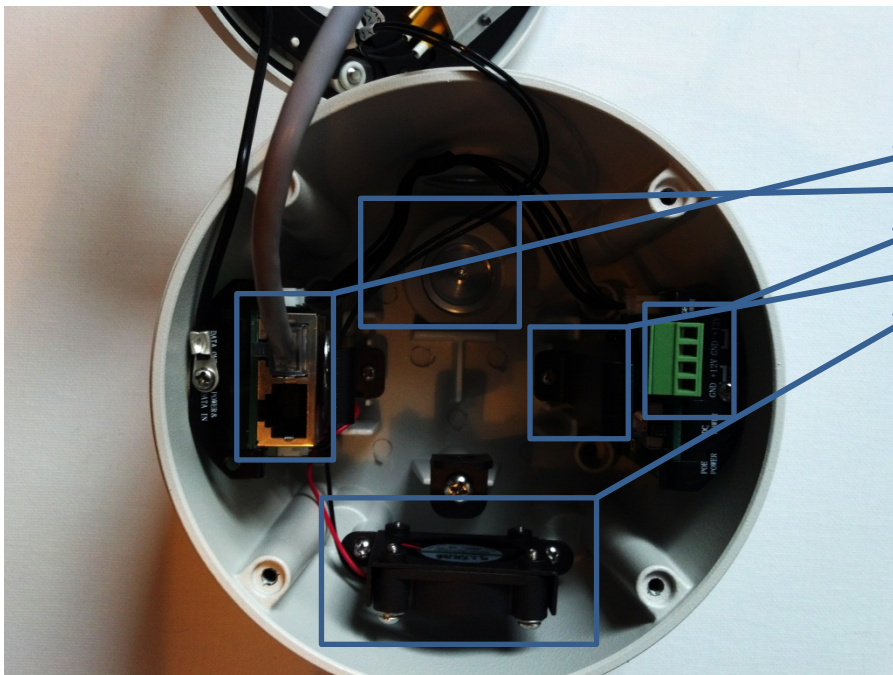
(a) Locate vandal screws



(b) Remove screws



(c) Remove vandal proof lid

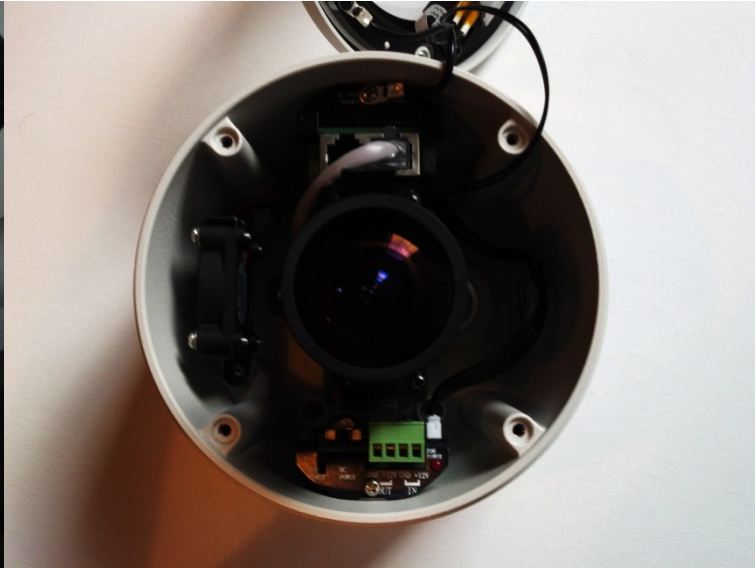


- POE Ports
- Conduit Hole
- Optional DC
- Locking Screw
- Blower

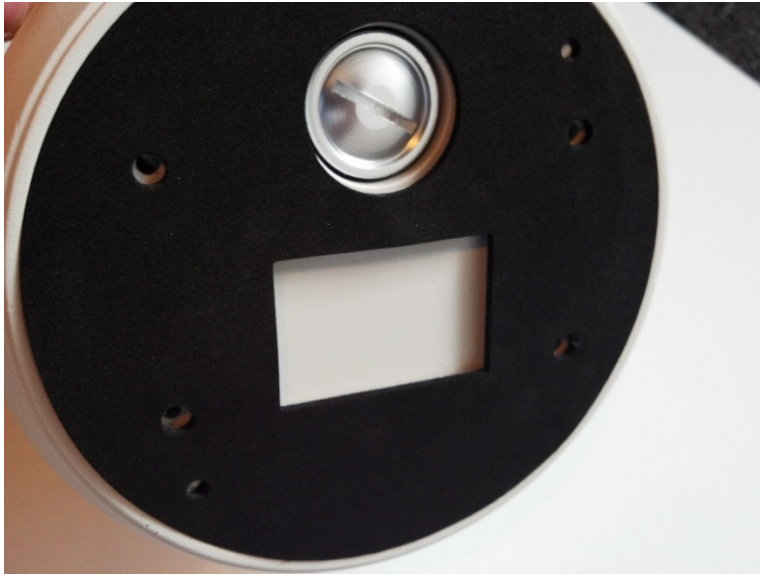
(d) Secure camera to lock



(e) Slide camera inside, lock into place



**Finished installation of camera into dome housing.**



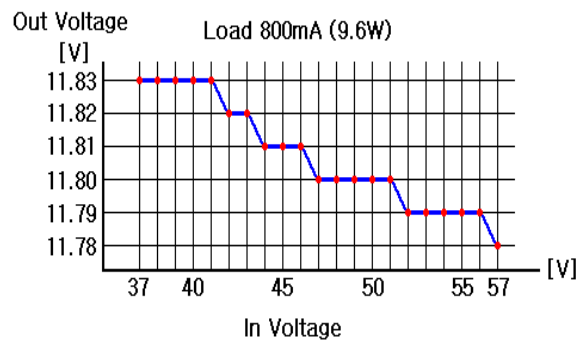
Located on the back of the camera are 4 (four) punch outs. Screws can be used to either surface mount the dome, or to attach to one of our adapters.

### Quick Reference Notes

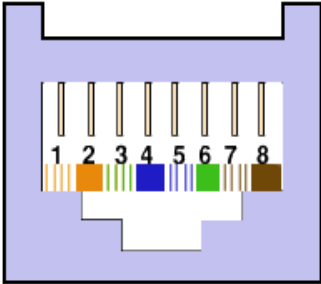
- *Open Dome cover with included ranch.*
- *Unscrew Camera plate.*
- *Install Camera Plate on Camera Body.*
- *Plug in all necessary cables.*
- *Install Camera with Camera Plate into the Dome Case and Camera holder Arm.*
- *Plug in Power.*
- *Close the cover and tighten the screws.*

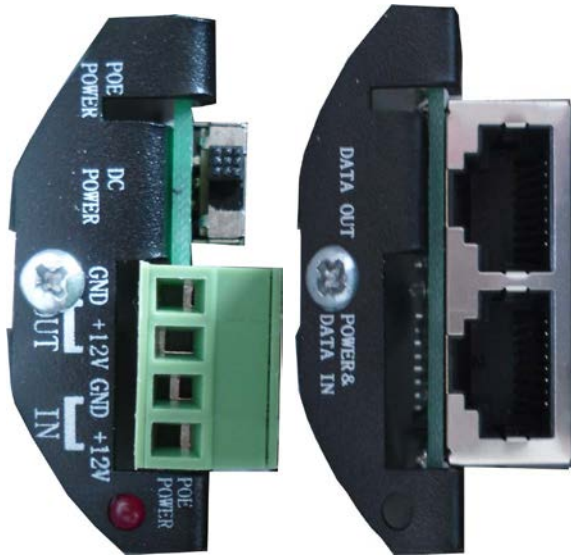
### 5. POE INFORMATION

- IEEE802.3af Fully Compliant
- Compatible with IEEE802.3af PD
- PD(Powered Device) Detection, Classification
- In-rush Current Limit, Over-current Protection
- Auto-restart Fault Management
- Easy Installation
- Optional Monitoring with LED
- Input Voltage : +38~57 VDC
- Output Voltage : DC 12±0.5V ( Max 10W )
- B75User Port Power : DC 12 ± B730.5V ( Max 5W )
- Fan : DC 12V ( 1W ) (Blowing all time)
- Heater : DC 12V ( 2W ) Under +15°C (±5°C).



## 6. OPTIONAL POWER INFORMATION

RJ45 Terminal Layout			
Terminal Layout	Pin	Input	Output
	1	Tx <sup>+</sup>	Tx+
	2	Tx <sup>-</sup>	Tx-
	3	Rx <sup>+</sup>	Rx+
	4	Power_A	Power_A
	5	Power_A	Power_A
	6	Rx <sup>-</sup>	Rx-
	7	Power_B	Power_B
	8	Power_B	Power_B



## 7. ACCESSORIES



FS-DM-WALL



FS-DM-CEILING



FS-DM-CORNER



FS-DM-POLE

**\*\*\* ACCESSORY IMAGES/APPEARANCES SUBJECT TO CHANGE \*\*\***