

MicroDome™ Megapixel IP Cameras

1.3–5MP H.264 All-in-One Ultra Low Profile Day/Night Indoor or Indoor/Outdoor IP Cameras (WDR option in 1080p and 3MP)

Low Profile All-in-One Dome Cameras with Integrated Lens, Audio and Optional WDR

Arecont Vision introduces MicroDome megapixel IP cameras. These small, ultra low profile cameras offer the great features of Arecont Vision megapixel technology like superior image quality, excellent compression and fast frame rates. MicroDome is available in both flush and surface mount configurations. An innovative spring arm design makes recessed installation a snap: simply slide the camera through the hole and secure the magnetized cover ring with a single screw. Every model comes equipped with a mechanical day/night switcher, and pixel binning on 3- and 5-megapixel models deliver excellent low-light capabilities. Add optional true Wide Dynamic Range (WDR) and difficult lighting conditions are overcome with MicroDome.



Flush Mount



Surface Mount



Image from a 5MP MicroDome camera

Highlighted Features:

- Ultra Low Profile Design / Small Size
- Very Easy Installation / Factory Focused
- All-in-One H.264 Total Power over Ethernet (PoE) Solution with Integrated 4mm Lens
- Optional True WDR up to 100dB at Full Resolution Available on Some 1080p and 3MP Models: See Clearly in Shaded and Bright Light Conditions Simultaneously
- Multiple Lens Options Available (sold separately)
- Integrated Microphone (-F Models)
- Casino Mode™ Guarantees Continuous 30fps Frame Rate Required by Gaming Industry Regulations (AV2455 Models)
- Binning Mode for Strong Low Light Performance in 3MP and 5MP Resolutions
- True Day/Night Functionality with Mechanical IR Cut Filter (DN Models)
- Tamper-Resistant Housing
- IP66(-S Models) and IK-10 Vandal-Resistant Housing
- Dual Encoder H.264/MJPEG
- Privacy Mask, 1024 Zone, Motion Detection, Flexible Cropping, Bit Rate Control, Multi-Streaming and Forensic Zooming
- Fast Frame Rates
- PSIA Conformant
- New User-Friendly Webpage
- Reduced Overall System Cost
- Made in the USA



Ultra Low Profile Design



All-in-One PoE and Integrated Lens



True Day/Night with Mechanical IR Cut Filter



Integrated Microphone (-F Models)



Vandal and Weather Proof IK-10 and IP66 Rated (-S Models)



Pixel Binning Mode on 3 and 5MP Models



Wide Dynamic Range Available on AV2456 and AV3456 Models



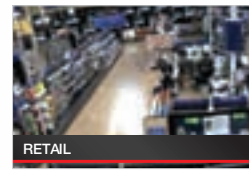
Casino Mode™ Maintains at Least 30fps on AV2455 Models



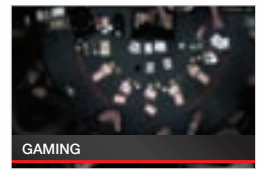
Dual Encoder H.264/MJPEG

Ultra Low Profile

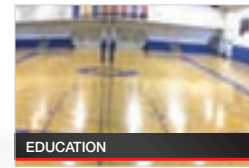
The flush mount MicroDome measures a mere 1.5" from the ceiling (2.6" for surface mount models) and is only 4" wide, offering video surveillance solutions for locations that require a small camera appearance with true Day/Night functionality. MicroDome is ideal for retail stores, schools, banks and office locations.



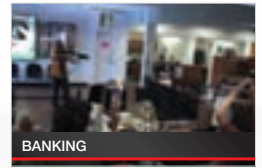
RETAIL



GAMING



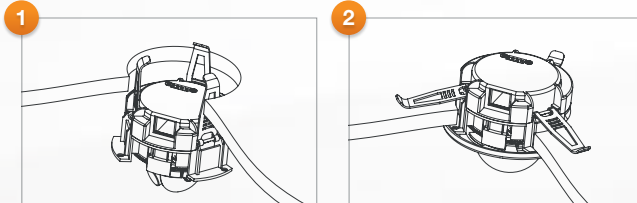
EDUCATION



BANKING

Easy Installation with MicroDome™ Flush Mount

MicroDome incorporates an innovative spring arm design meant for simple installation into drop ceilings with no external hardware required. Simply cut a hole in the ceiling and the MicroDome pops into place, securing itself with no fasteners to contend with. The MicroDome is a total Power over Ethernet (PoE) solution eliminating the need for separate power cables.



Integrated Microphone

The flush mount MicroDome has an integrated microphone, eliminating the need to install separate audio connectors on site. (Can be disabled.)



Outdoor-Ready and Vandal-Resistant with MicroDome™ Surface Mount

You can install the MicroDome camera in the surface mount configuration with confidence both indoors and outdoors. Small but tough, the MicroDome Surface Mount camera is IP66 environmentally-rated and IK-10 impact-resistant. The camera can withstand dust and water ingress as well as forceful blows and still stay on duty protecting your environment with detailed megapixel images.

MegaDynamic® Wide Dynamic Range (WDR)

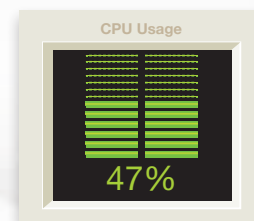
Users can achieve clear images in extreme lighting conditions with MicroDome WDR cameras in resolutions of 1080p and 3MP. Wide Dynamic Range up to 100dB at full resolution balances light and dark areas in the same scene, such as in the lobby of an office building or the loading dock at a distribution facility.



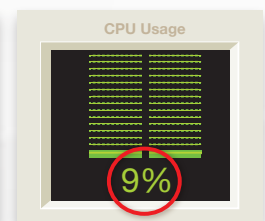
Megapixel image without WDR



Megapixel image with WDR



2MP with live video in MJPEG



2MP with live video in H.264

Compliant H.264 Compression

MicroDome's compliant implementation of H.264 allows full frame rates and full resolution without sacrificing image quality and offers H.264 and MJPEG dual compression support with simultaneous streaming. With bit rate control, the CPU load is decreased at both the client (decompression) side and the server/storage side, allowing lower bandwidth and storage relative to MJPEG. Real Time Streaming Protocol (RTSP) allows for compatibility with media players such as Apple QuickTime®, VLC and others.

MicroDome™ Megapixel IP Cameras

Enhanced Low Light Performance



Day Mode



Night Mode

As part of their superior Day/Night operation, MicroDome cameras include low light enhancing technology such as a mechanical IR (infrared) cut filter, pixel binning and adaptive noise-cancellation.

User-Friendly Web Interface

For easy installation, configuration and ongoing control, MicroDome uses our new user-friendly web interface management system that is loaded with easy to use menus to adjust and fine tune your camera settings. Slider bars and numeric text boxes allow complete control of the following camera features:

- Image Settings
- Video Compression
- H.264 Stream Settings
- Network Options
- Motion Detection
- Privacy Mask Settings
- Administration
- About - Camera Details



Forensic Zooming

Arecont Vision MicroDome megapixel cameras deliver outstanding resolution to capture significant detail whether viewing live or recorded/archived video. With the ability to digitally Pan-Tilt-Zoom (PTZ) images, you can view the details you need to see at any time, such as license plates, faces and other objects of interest. The superior resolution of the MicroDome megapixel cameras, along with the multiple lens options available as accessories (see lens chart), offer users a variety of fields of view. This makes it possible for the MicroDome to do the work of multiple conventional cameras and provide critical forensic information—all without the need and associated expense of system operators having to “catch” activities of interest as they occur.



Digital Zoom Field of View



Wide Field of View

Other Features



Multi-Streaming
8 Non-Identical Streams



Motion Detection
1024-Zone Motion Detection



Bit Rate Control
Bandwidth Limiting



Privacy Masking
Privacy Masking for Multiple Regions



Flexible Cropping
Windowing Down to 1x1 Pixels for JPEG and 2x2 Pixels for H.264



Reduced System Cost
Overall Reduced Total Cost of Ownership



Product Comparison



Model	Sensor	Full Resolution	Max Frame Rate @ Full Resolution	Minimum Illumination	Lens	H.264/MJPEG	Day/Night	WDR	Casino Mode™	Binning Mode
AV1455DN	1.3MP	1280 x 1024	42fps	Color: 0.1 Lux B/W: 0 Lux, IR Sensitive	M12, 4mm, 1/2.5", F1.6, Fixed Iris, H-FOV = 53°	•	•			
AV2455DN	1080p	1920 x 1080	31fps	Color: 0.1 Lux B/W: 0 Lux, IR Sensitive	M12, 4mm, 1/2.5", F1.6, Fixed Iris, H-FOV = 79°	•	•		•	
AV2456DN	1080p	1920 x 1080	30fps	Color: 0.3 Lux B/W: 0 Lux, IR Sensitive	M12, 4mm, 1/2.5", F1.6, Fixed Iris, H-FOV = 59°	•	•	•		
AV3455DN	3MP	2048 x 1536	21fps	Color (Non-Binning): 0.3 Lux Color (Binning): 0.15 Lux B/W: 0 Lux, IR Sensitive	M12, 4mm, 1/2.5", F1.6, Fixed Iris, H-FOV = 66°	•	•			•
AV3456DN	3MP	2048 x 1536	21fps	Color (Non-Binning): 0.3 Lux Color (Binning): 0.15 Lux B/W: 0 Lux, IR Sensitive	M12, 4mm, 1/2.5", F1.6, Fixed Iris, H-FOV = 63°	•	•	•		•
AV5455DN	5MP	2592 x 1944	14fps	Color (Non-Binning): 0.3 Lux Color (Binning): 0.15 Lux B/W: 0 Lux, IR Sensitive	M12, 4mm, 1/2.5", F1.6, Fixed Iris, H-FOV = 83°	•	•			•

Configurations



Flush Mount (-F)



Surface Mount (-S)

Lens Options

Focal Length		2.8mm	4mm	6mm	8mm	12mm	16mm
F Stop		F1.8	F1.6	F1.6	F1.6	F1.6	F1.6
Horizontal FOV	1.3MP	71	53	35	26	17	13
	1080p	106	79	52	39	26	20
	1080p WDR	83	59	42	31	19	15
	3MP	90	66	46	34	23	17
	3MP WDR	88	63	45	33	20	16
	5MP	114	83	58	43	29	22
Option		Ordered Separately	Standard	Ordered Separately	Ordered Separately	Ordered Separately	Ordered Separately



Global Sales and Support

Arecont Vision is the leading manufacturer of high-performance megapixel IP cameras and associated software. All Arecont Vision cameras are made in the USA.

North America

Los Angeles, USA

Arecont Vision, LLC. Headquarters
425 E. Colorado St., 7th Floor
Glendale, CA 91205, USA

Phone: +1.818.937.0700
Toll Free: 877.CAMERA.8
Fax: +1.818.937.0464

Sales

Phone: +1.818.937.0700 x 3
Email: avsales@arecontvision.com

Support

Phone: +1.818.937.0700 x 1
Email: support@arecontvision.com

South America

Latin America

Email: latam.sales@arecontvision.com

EMEA

Frankfurt, Germany

Arecont Vision Europe GmbH
Lyoner Straße 38, 5th Floor
60528 Frankfurt, Germany

Phone: +49.69.6953.4600
Email: europe.sales@arecontvision.com

Moscow, Russia

CJSC Arecont Vision
121351, Russian Federation, Moscow, 58/1,
Molodogvardeiskaya str.

Phone: +7.495.649.0577
Fax: +7.495.221.5227
Email: info@arecontvision.ru

Middle East

Email: mena.sales@arecontvision.com

Africa

Email: africa.sales@arecontvision.com

APAC

Shanghai, China

Resident Representative Office of
Arecont Vision, LLC in Shanghai
Taolin Road No. 18, Building A
World Plaza, Room #1603
Pudong New District, Shanghai, 200135
P.R.China

Phone: +86.21.6176.2596
Alt. Phone: +86.21.6176.2597
Fax: +86.21.6085.2520
Email: apac.sales@arecontvision.com